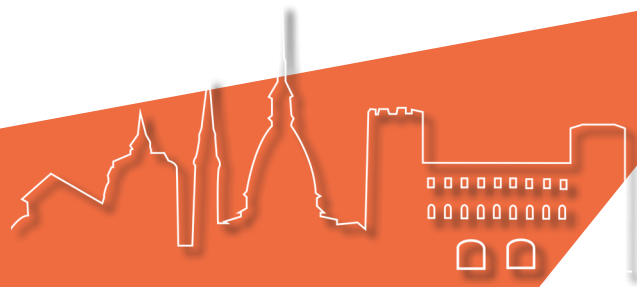


TURIN

anti-racist city



**ARE YOU
A VICTIM
OR WITNESS**

of discrimination based on **racial, religious, ethnic or xenophobic prejudice or for other reasons?**

For example, comments or insults, unfavourable treatment, and exclusion from a service or opportunity.

**CONTACT THE
NETWORK**

**against DISCRIMINATION and
its INFORMATION POINT**



TURIN METROPOLITAN NODE AGAINST DISCRIMINATION



Receives by appointment in Turin in Corso England 7,
at the offices of the Metropolitan City of Turin.

To make an appointment or ask for information

contact the following:

cell e whatsapp 349 6510627 · 331 268 4671

Tel. 011 861 6387 · 011 861 7830

e-mail · antidiscriminazioni@cittametropolitana.torino.it

ANTI-DISCRIMINATION INFORMATION POINTS

ALMATERRA · www.almaterratorino.org

AMMI · ASS. MULTIETNICA DEI MEDIATORI

INTERCULTURALI: www.mediatoreinterculturale.it

ANGI · ASS. NUOVA GENERAZIONE ITALO-CINESE:

www.angitalia.org

ARTICOLO 10 · www.articolo10.org

ASAI · www.asai.it

BALON MUNDIAL · www.balonmundial.it

PROGETTO TENDA · www.progettotenda.net

DIACONIA VALDESE · www.giovanieteritorio.org

UFFICIO PASTORALE MIGRANTI · www.upm torino.it

*Regional anti-discrimination network coordinated by the
Piedmont Region in collaboration with IRES Piedmont.*

OTHER USEFUL SERVICES

ANAGRAFE www.comune.torino.it/anagrafe

REPARTO POLIZIA di PROSSIMITÀ

Comando Polizia Municipale

Via Bologna 74 · tel. 011 011 34300

Centrale operativa · tel. 011 011 1

CENTRO INTERCULTURALE www.interculturatorino.it

SPORTELLO CASA

Single number 011 011 24 300

Call Monday through Friday · h. 8.30 - 12.00

www.comune.torino.it/informacasa