

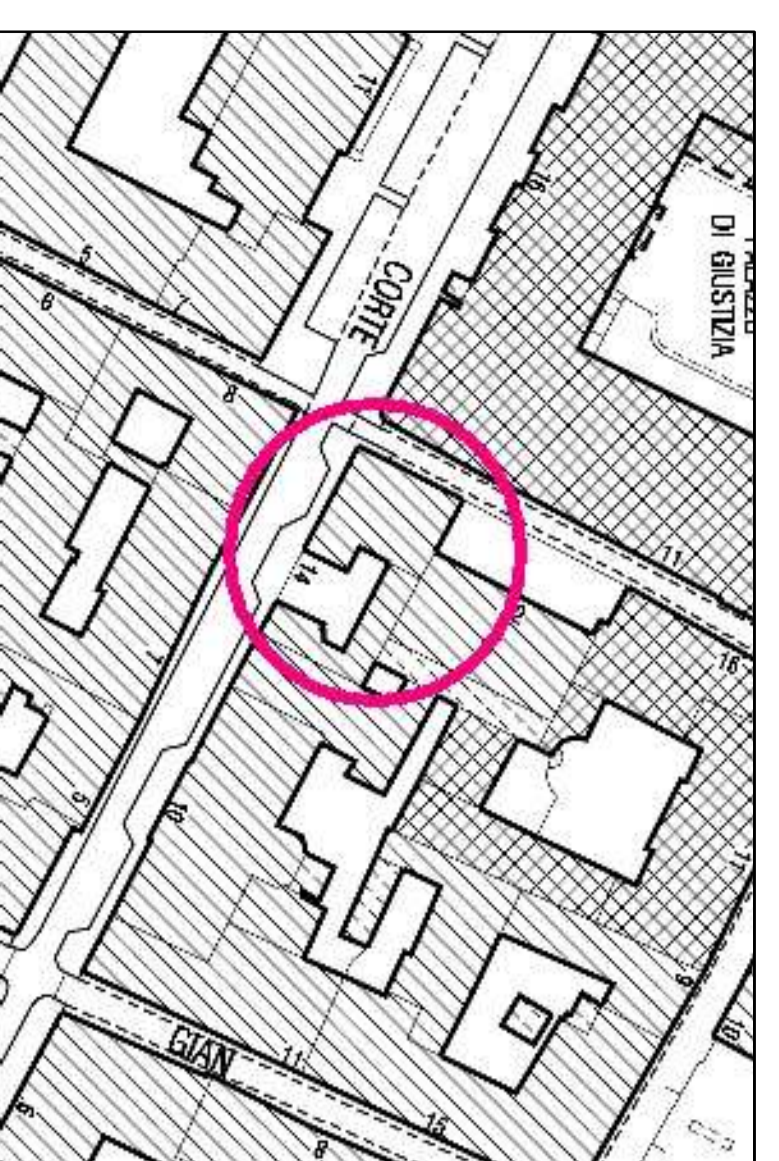
CITTA' DI TORINO  
DIREZIONE EDIFICI MUNICIPALI, PATRIMONIO E VERDE  
SERVIZIO VALUTAZIONI

IMMOBILE MUNICIPALE  
VIA CORTE D'APPELLO 14  
"CASA PANETTI"

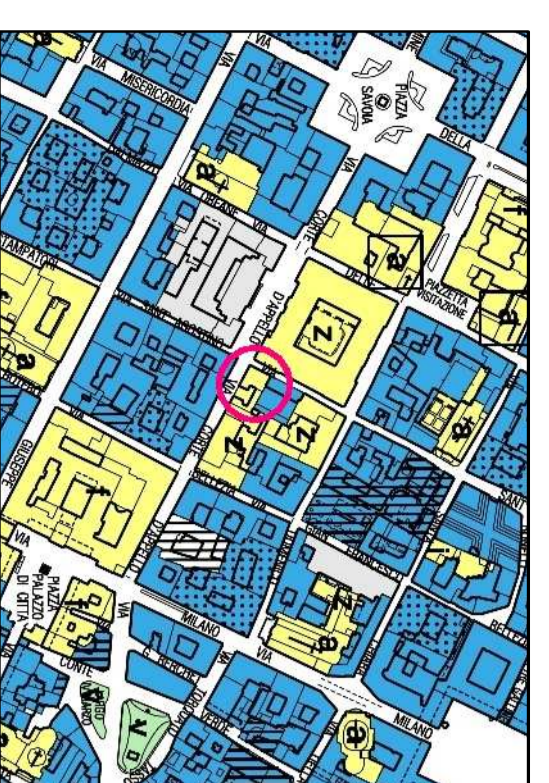
Resp. Pos. Org.: geom. Marco PETTI

STATO DI FATTO

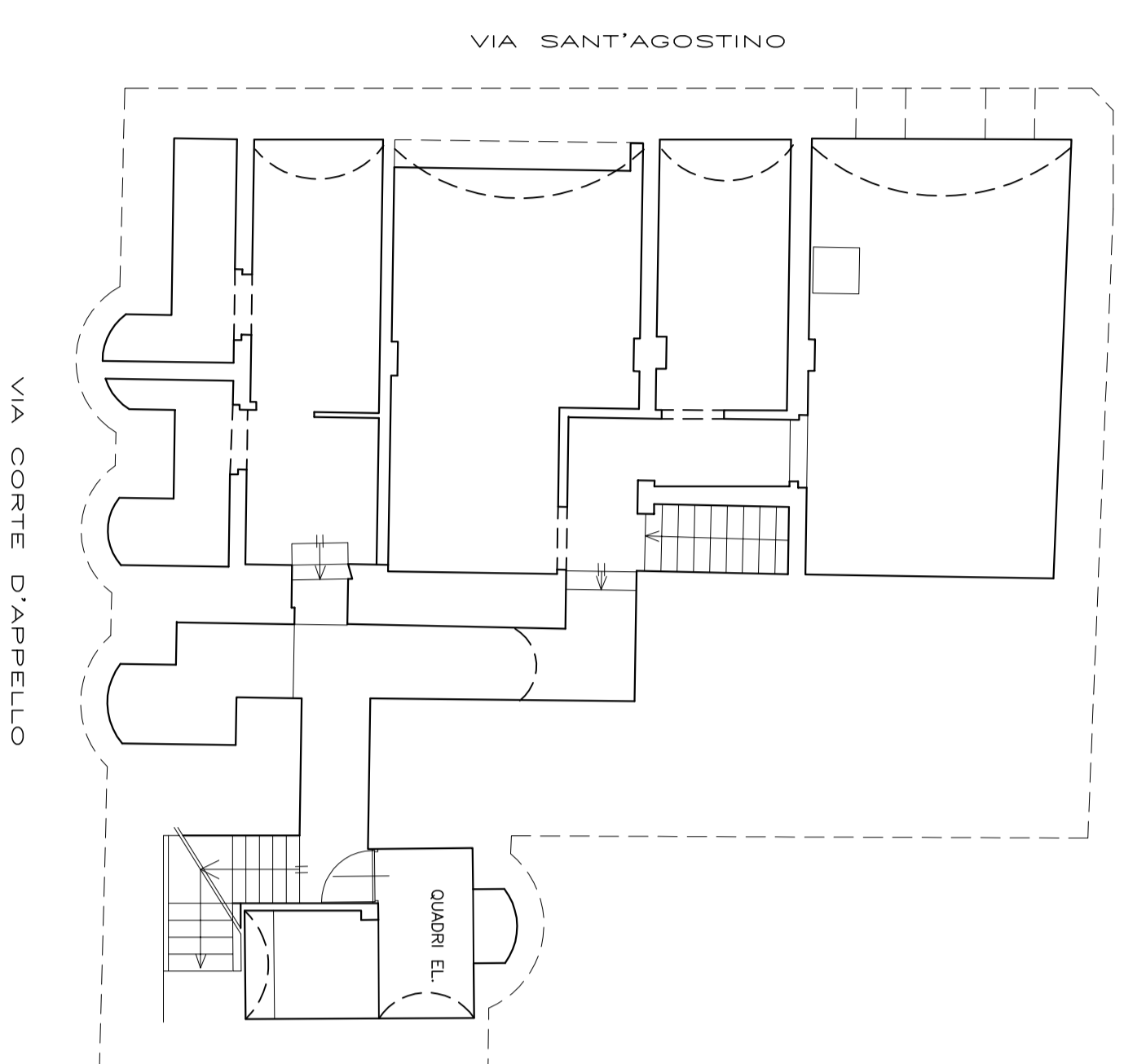
OGGETTO		NOME-FINE		Scala	1:100
PLANIMETRIE		RIFERIMENTO		E110	
REV.	MODIFICHE	DATA	OPERATORE	SCALA	1:100
0	MESSINE	12/2014		ELABORATO	1/1
1					
2					
3					
4					
5					



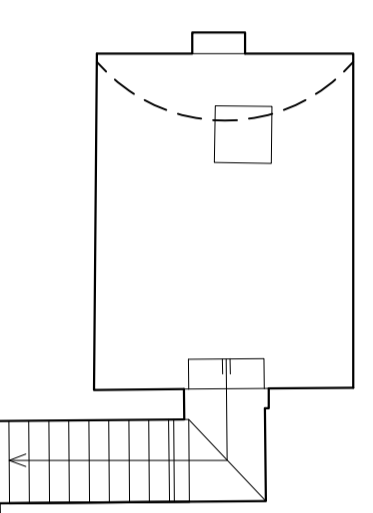
Estratto di Carta Tecnica - scala 1:1000



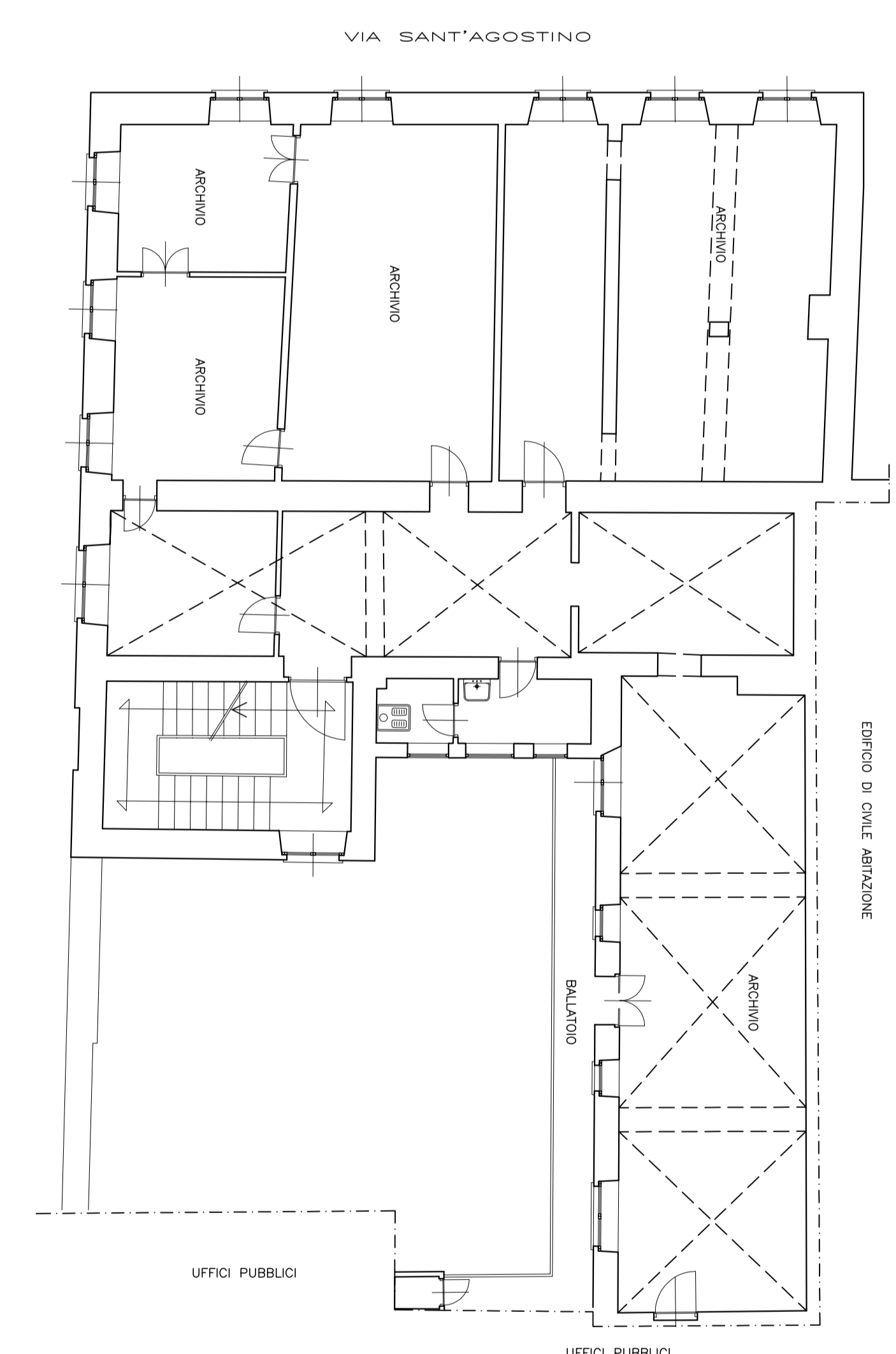
Estratto di P.R.G. - scala 1:5000



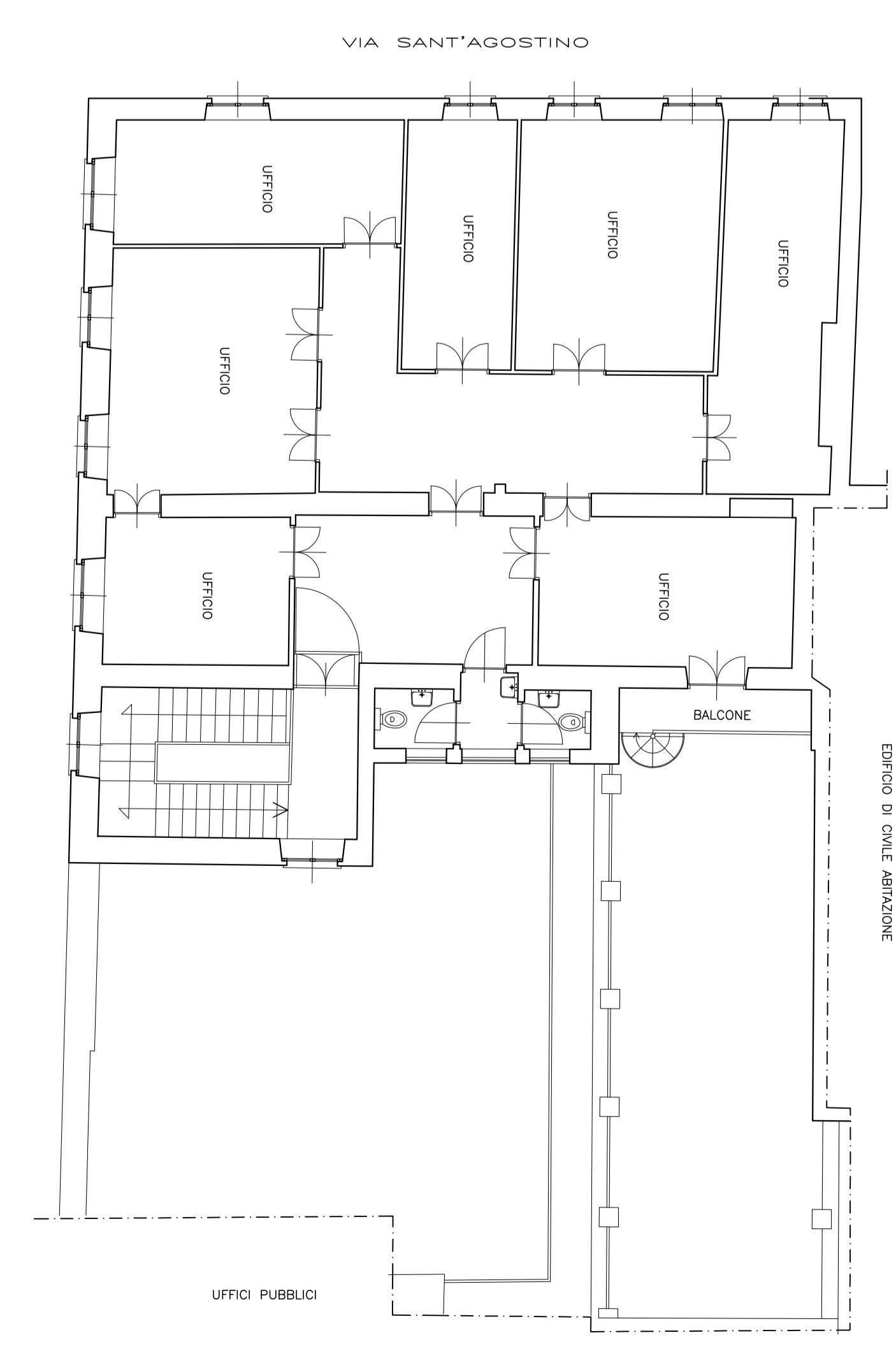
Pianta Piano Terreno



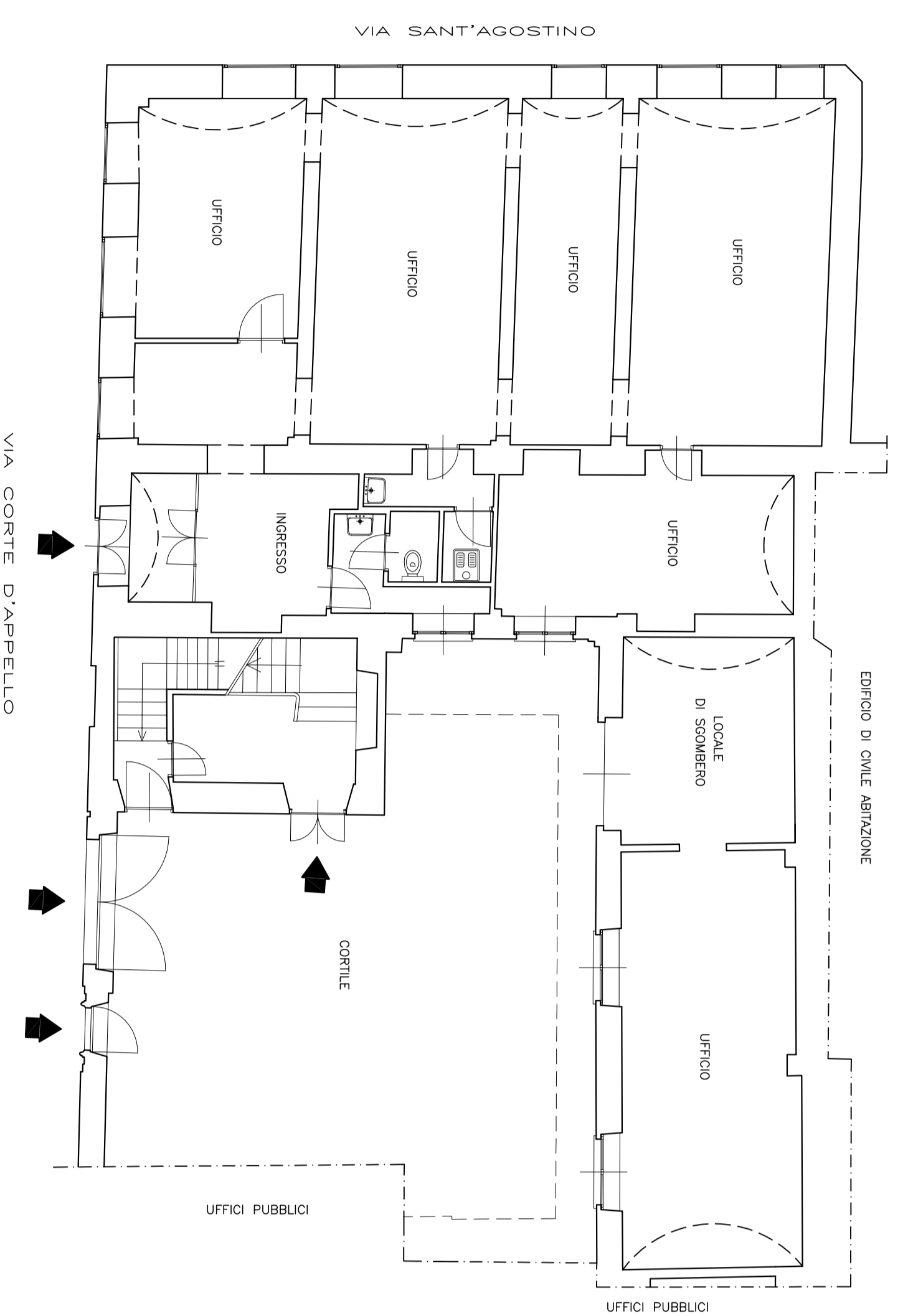
Pianta Piano Secondo Intertrato



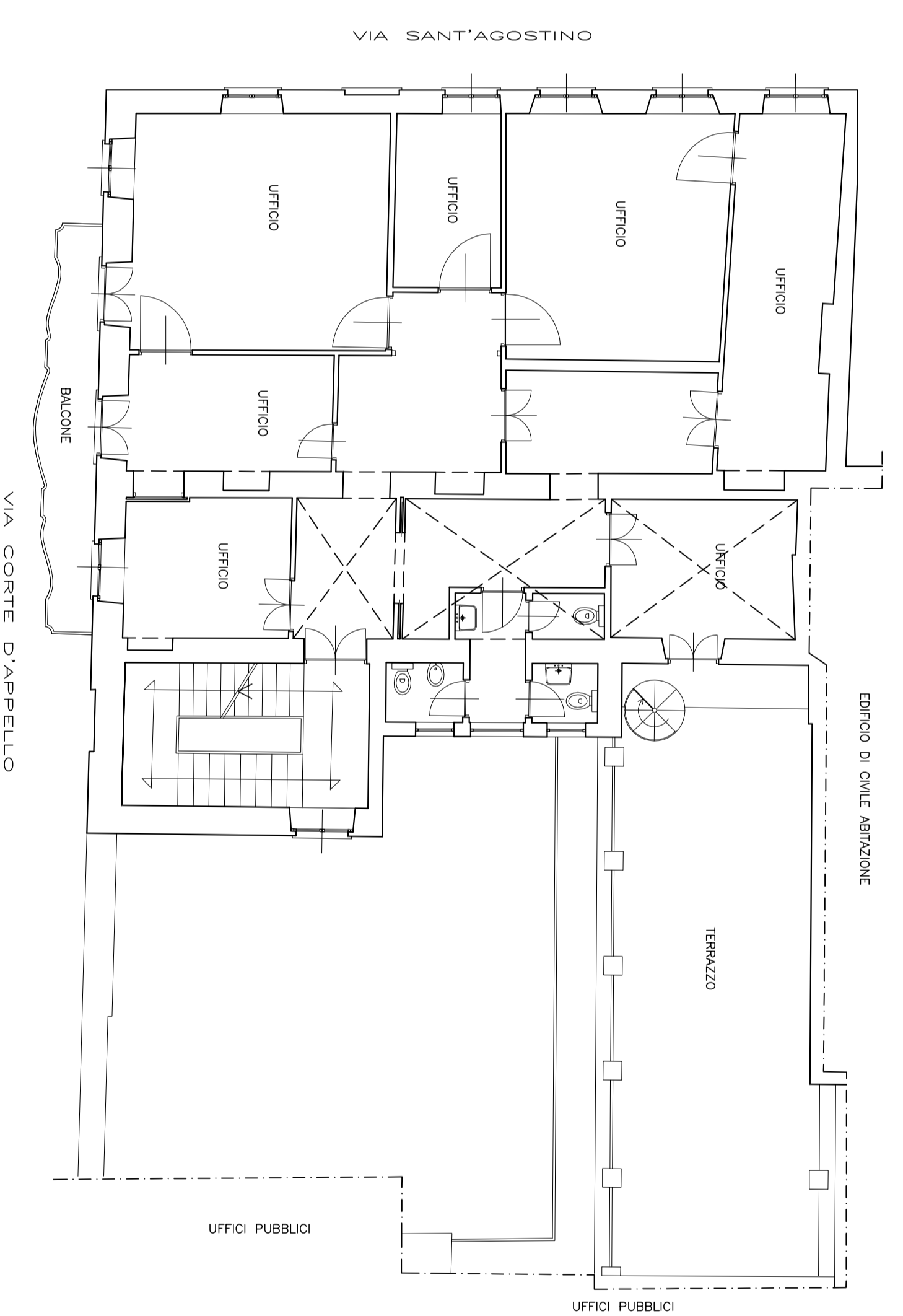
Pianta Piano Ammezzato



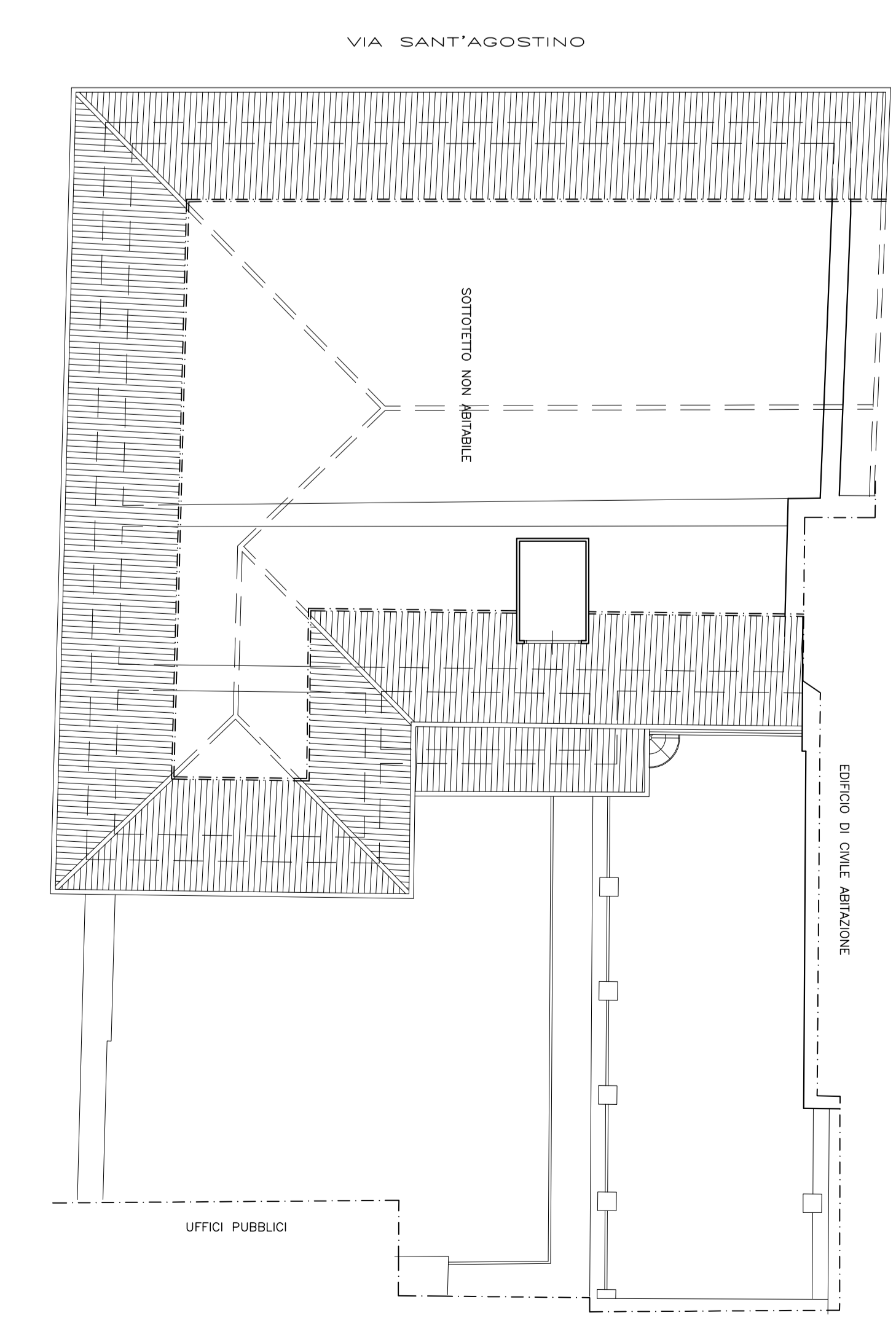
Pianta Piano Secondo



Pianta Piano Terreno



Pianta Piano Primo



Pianta Piano Sottotetto