

CITTA' DI TORINO

VICE DIREZIONE GENERALE
SERVIZI TECNICI
COORDINAMENTO EDIFICI SCOLASTICI
SETTORE EDILIZIA SCOLASTICA NUOVE OPERE

Opere di manutenzione straordinaria
per ottenimento C.P.I. in edifici scolastici
(Via Fleming, 20 - Via Isler, 15)

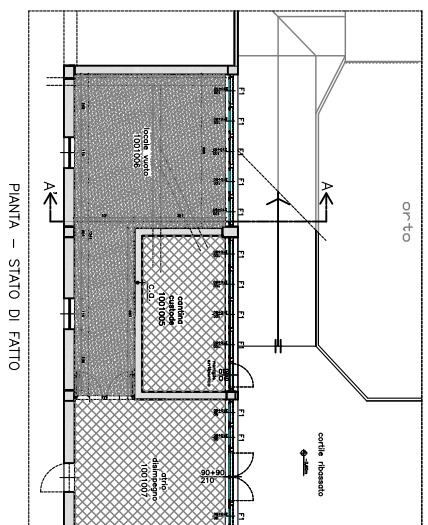
GRUPPO DI LAVORO
www.pentolopati.it
Arch. Andrea MIGNA
Arch. Andrea MIGNA
Dott. Arch. Mauro MASCONI
Dott. Arch. Stefano MORI
Dott. Arch. Enrico BERGOLINI
Dott. Ing. Marco DI GIACCHI
RESPONSABILITA' PROGETTAZIONE
E DIRIGENTE DI SVILUPPO
Arch. Isabella QUINIO

PROGETTO ESECUTIVO

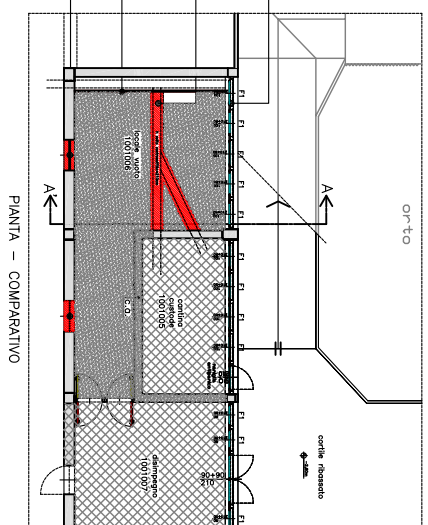
PIANTA PIANO SEMINTERRATO PARTICOLARI COSTRUTTIVI

OGGETTO	MONTE-TALE - Parco Polo Sed. 0000000000 / RIF. 0000		
SCALA	1:100/1:50		
DATA	Febbr. 2005		
REVISIONI			
0	MESSURE	DESCRIZIONE	ELABORATO
1			
2			
3			
4			
5			

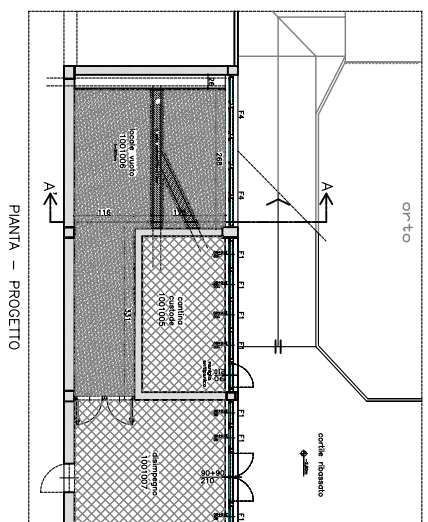
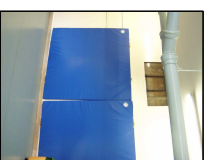
001
P



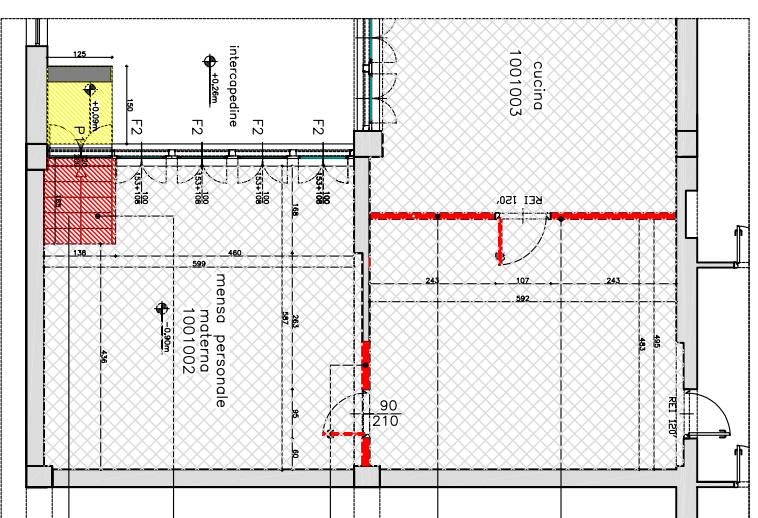
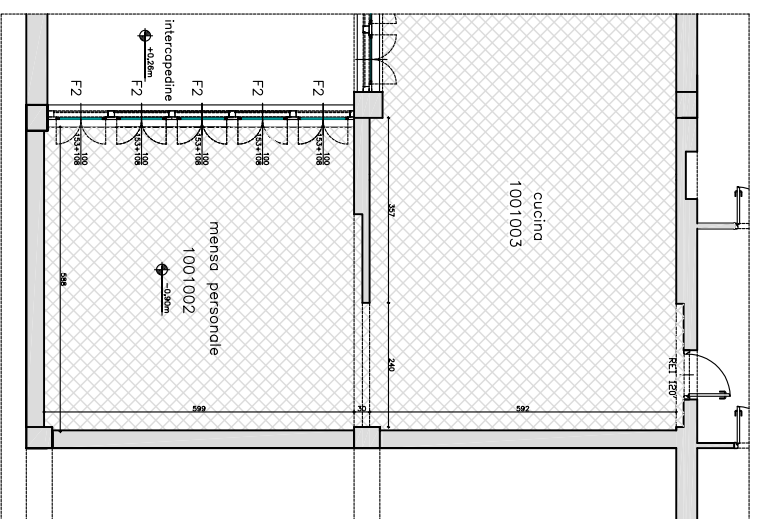
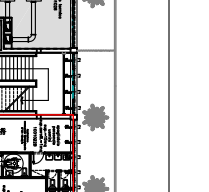
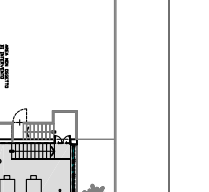
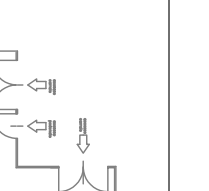
01'-to
corteo alveolato



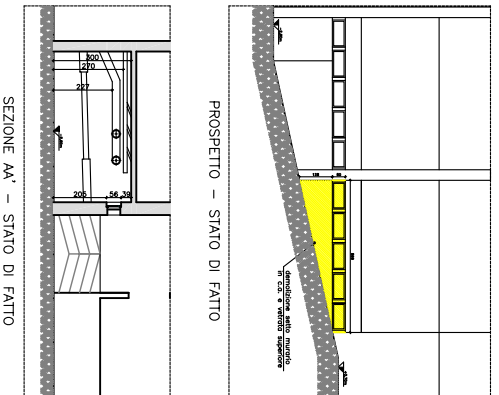
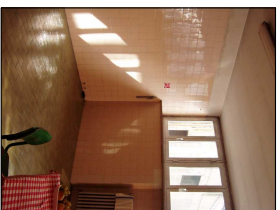
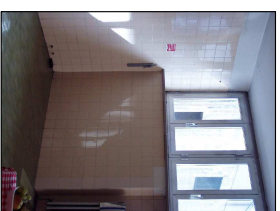
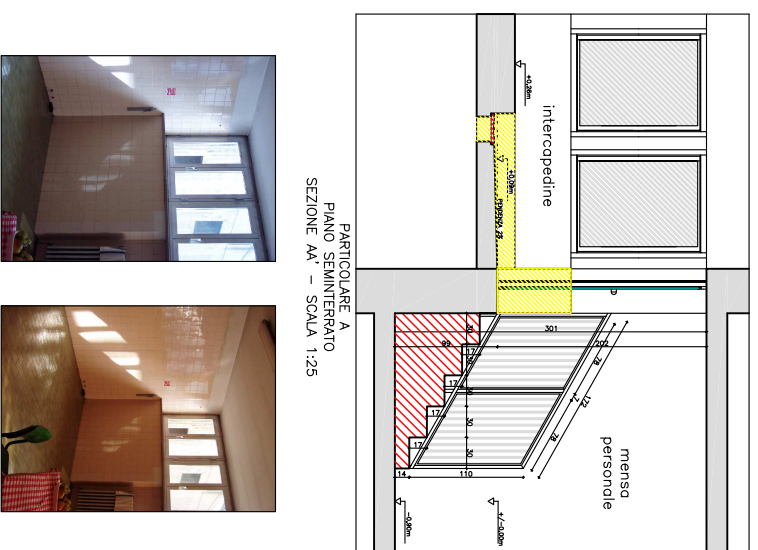
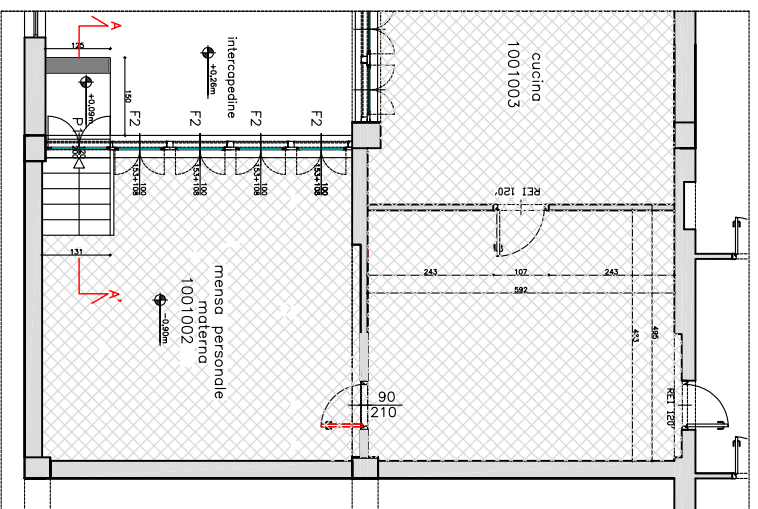
01'-to
corteo alveolato



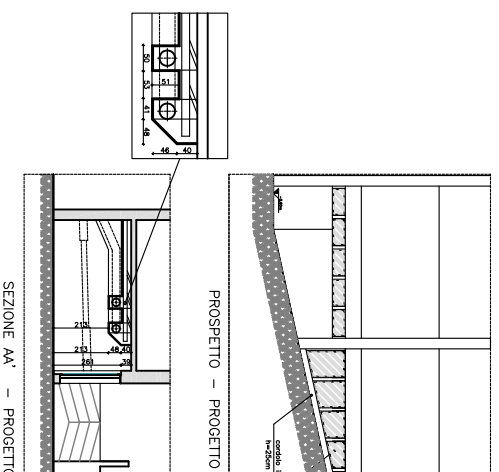
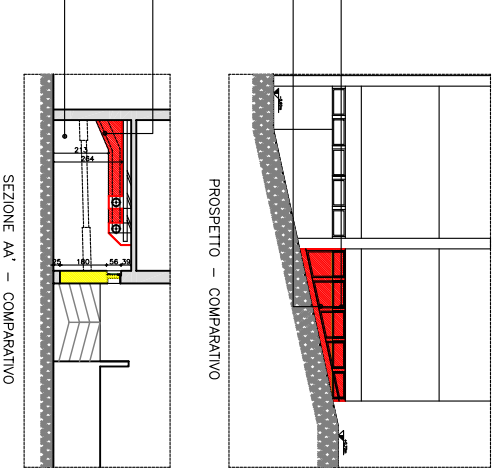
01'-to
corteo alveolato



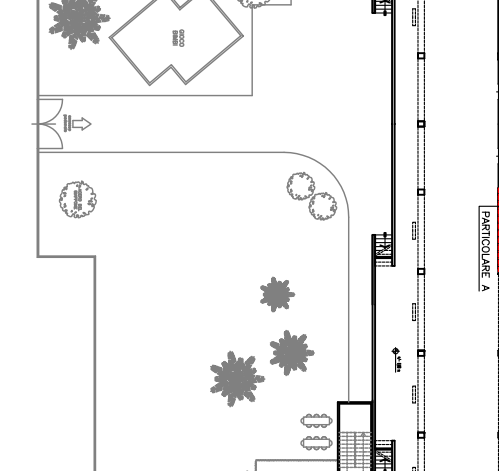
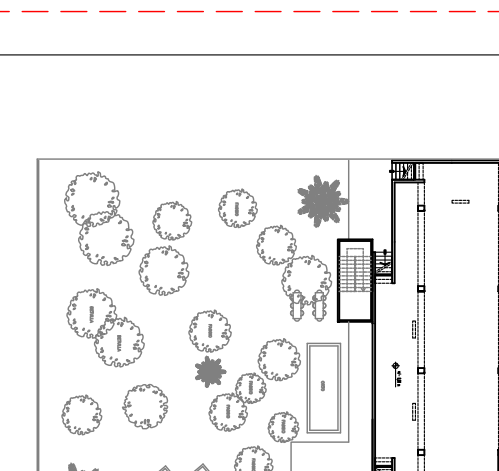
decorazione di entrambe le pareti con fissativo e idropittura
nuova parete REI 120' di spessore > 12 cm in blocchi di cls divoleone (dim. 12x20x50cm) con porta REI 120' (dim. 90x200cm) con maniglione antipanico
muratura REI 120' e porta REI 120' di dim. 90x200cm con relativo maniglione antipanico
realizzazione di scala in muratura e trasformazione di un vano finestra in vano porta. inserimento di porta con maniglione antipanico.
inserimento di griglia per raccolta acqua meteorica e sottostante materiale drenante



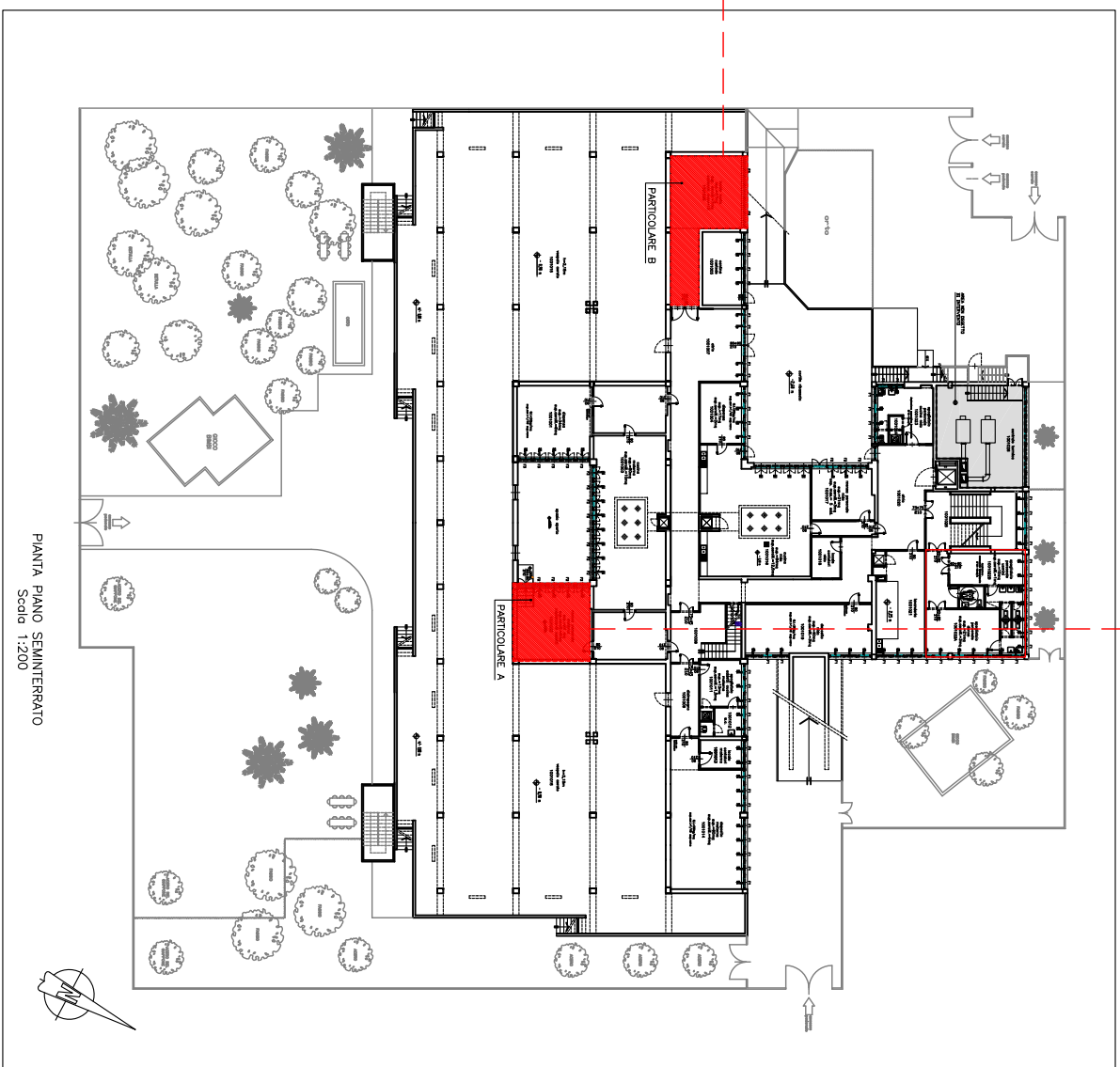
01'-to
corteo alveolato



01'-to
corteo alveolato



01'-to
corteo alveolato



PIANTA PIANO SEMINTERRATO
Scala 1:200